

REAL-TIME SUPPORT FOR REAL LIVING:

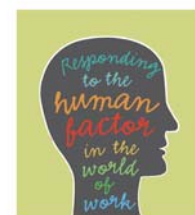
WORK-LIFE RESOURCE AND REFERRAL



FEATURES INCLUDE:

- Live assistance locating resources and matched referrals per your request
- Educational resources, literature, tip sheets and handbooks
- Support for you, as well as those in your family and/or household

To help you make time for what matters most, you and your family have access to the work-life resource and referral service. The service offers live assistance from a professional consultant to provide support for any work, personal, or everyday issue that's important to you and your family.



CLAREMONT EAP

To get started, call toll-free 800-834-3773 or log on to www.claremonteap.com

CLAREMONT EAP

- **Child Care:** Preschool and Nursery Schools, Before and After School Care, Family Day Care Home, Child Care Centers, In Home Care, Babysitters, Au Pair/Nanny Agencies, Sick Child Care, Back-up and Odd Hour Care, Special Needs Care, Self-Care Resources, Summer Programs, Day Camps, Residential Camps, Specialty Camp Programs, Sports Programs, International Study Programs, Leadership/Travel Programs for Teens, Summer School, Computer Literacy Programs
- **Older Adults / Elder Care:** Acute/Post-Acute Rehabilitation Programs, Skilled Nursing Facilities, Assisted Living Facilities, Medicare/Medicaid, Adult Day Care, Adaptive Transportation Services, Volunteer Organizations, Cancer Care Centers, Disease Management Programs, Hospices, Home Health Agencies and Nursing Programs, Home Medical Equipment, Chore and Companion Services, Senior Centers, Retirement Communities, Geriatric Case Management Services, Gerontologists, Insurance, Independent Living Centers, Alzheimer's Support, Community Services, Dependent Adult under 65 Resources, Mentally Retarded/Developmentally Delayed support services, Veteran's Services and Support Resources
- **Education: K – 12th Grade:** Kindergarten Programs, Enrichment Programs, Tutors, Public Schools, Private Schools, Parochial and Religious Schools, Montessori & Independent Schools, Home Schooling, Special Needs Education, Alternative Schools, Charter/Magnet Schools, School District Profiles and School Report Cards
- **Education: College & University:** 2 & 4 Year Colleges, Graduate Schools, Community Colleges, Vocational Colleges, Athletic Programs, Continuing Education, Elder Hostel, Financial Aid, Scholarships, Career Development, Resume Writing Services, Certification Programs
- **Parenting Skills:** Child Development, Child Safety, Child Nutrition, Discipline, Toilet Training and Bed-wetting Issues, Blended Families, Grandparents as Parents, Bedtime Routines, Parenting Classes & Support Groups, Playgroups, Raising Teenagers
- **Adoption:** Adoption Agencies, Adoption Attorneys, Adoption Advocacy Groups, State Adoption Specialists, International Adoption, Adoption Subsidies, Adoption Support Groups, Non-traditional Adoptions, Infertility Information/Resources, Adoptee Support Groups
- **Health & Wellbeing:** Children's Health Resources, Alternative Medicine, Complimentary Medicine, Diet & Nutrition Programs/Services, Fitness Centers/Programs, General Health Resources, Men's Health Resources, Physician Searches, Safety Programs, Senior Health Resources, Women's Health Resources, Chronic/Rare Condition Support Groups and Resources
- **Daily Living/Convenience:** Pet-sitters/Kennels, Veterinarians, Pet Obedience Training, Home Repair, Apartment Locators, Chore Services/House Cleaners, Fitness and Wellness Centers/Programs, Volunteer Opportunities, Transportation and Travel Services, Moving/Relocation Services

Call toll-free 800-834-3773 or log on to www.claremonteap.com